



PROHOLD WORKHOLDING VISES
*Now Manufactured and Supported by
 Planet Products Corporation*

Standard 4” Hydraulic Vise



Featuring:

- **Hydraulic Clamping** - Provide adjustable & consistent clamping force.
- **Full Bi-Directional Clamping Stroke** - On each jaw.
- **Top Jaws** - Quick Change with hardened inserts or fully machinable soft jaws.
- **Dead Jaws** - Can be mounted in middle or either end.
- **Rear Jaws** - Can be deactivated for front jaw clamping only.
- **Manual Actuation** - With manual Open/Close valve.
- **Full Automation capable** - With solenoid valves or cross-over plate in place of manual valve.
- **Precision Mounting** - Key slots and dowel pins.
- **Numerous Mounting Applications Possible:**
 - For **VMC's**:
 - As Individual Stand-Along Units
 - Stack In-Line (Side-by-Side)
 - Manifold Mounting to Table Plates
 - For **HMC's**:
 - Mounted on Hydraulic Tombstone



Specifications

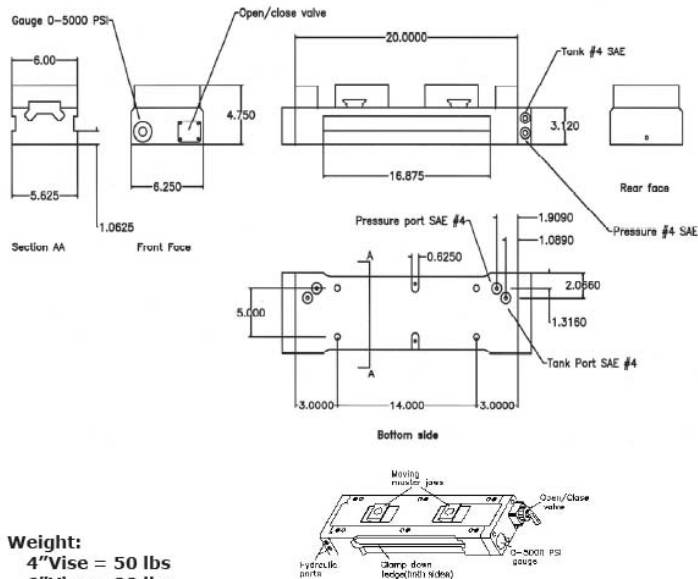
Jaw Stroke	<i>1.75” (Optional Stroke Limiter Available)</i>
Clamping Force	<i>3 ton (approx) at 3800 psi pump pressure</i>
Std Clamping Range	<i>0-16”</i>
Vise Actuation	<i>Manual or Solenoid Valve</i>
Clamping Direction	<i>Bi-direction (inward & outward)</i>
Pressure Compensation	<i>Built-in internal accumulators & check valve</i>
In-Line Stacking Capability	<i>Internal common tank- Pressure manifold</i>
Vise Mounting	<i>Bottom mount – keyway & dowel pins, 3/8-16’ holes</i>
Hydraulic Porting	<i>On 3 faces (bottom & 2 sides), #4 SAE Plugs, & 3/8” dia</i>

Planet Products Corporation – Manufacturing Precision Products

4200 Malsbary Road, Cincinnati, OH 45242 513-984-5544 www.planet-products.com

DIMENSIONS

**4", 6" Hydraulic Vise : VC42 - 2Q# - EHS0 - #
: VC62 - 2Q# - EHS0 - #**



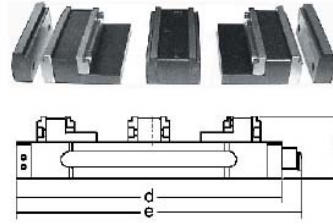
Weight:
4" Vise = 50 lbs
6" Vise = 88 lbs

Dimension	a	b	c	d	e	f	g	h (Thread)	i (Pin)	j	k	m	n (Pin)	p (Thread)
Hydraulic Vise														
VC42-2Q#-EHS0-#	5.000	2.750	2.412	19.500	22.10	4.33	4.40	7/16-14	0.4375	13.000	7.500	3.593	0.5005	3/8-16
VC62-2Q#-EHS0-#	6.250	3.500	3.120	22.500	25.30	5.300	5.620	0.5-13	0.5005	14.000	7.500	4.000	0.5005	0.5-13

unit: inch

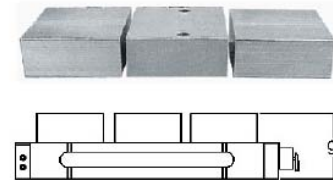
Std. Hard Jaw (Steel) set

VC4A-HJ-01 (3 pcs+ 2 High Inserts)
VC4A-HJ-01 (3 pcs+ 2 High Inserts)

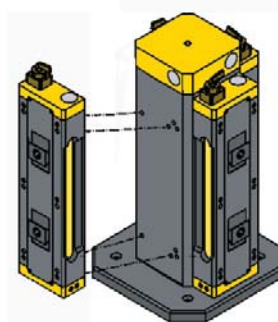
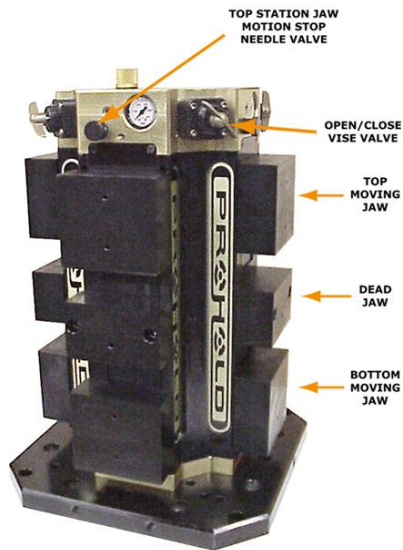


Std. Soft Jaw (Al) set

VC4A-SJ-01 (3 pcs)
VC6A-SJ-01 (3 pcs)



Tombstone Applications for Horizontal Machining Centers



Vises mount on a PACHYDERM™ Tower



View of Internal Hydraulic Pump in a PACHYDERM™ Tower

Planet Products Corporation – Manufacturing Precision Products

4200 Malsbary Road, Cincinnati, OH 45242 513-984-5544 www.planet-products.com